

Visit Dane County Parks

April 2021



Foundation for
Dane County Parks



This month take time to enjoy nature by visiting local parks in Dane County.

While visiting any Dane County park, take a picture and share on Facebook by April 30 using **#HealthyParksHealthyYou** for a

Winners will be randomly selected each month. Your Facebook post must have the audience **set to public**, so your entry is visible.

CHANCE
TO WIN A
GIFT!

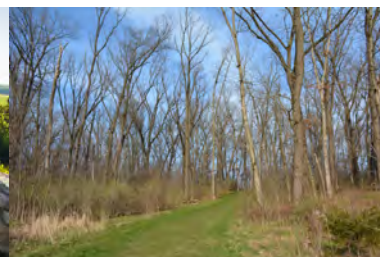


Learn more about the parks by visiting danecountyparks.com

This Month's Featured Parks



Photo credit: Rona Neri Bergmann



Prairie Moraine

Featuring a segment of the Ice Age National Scenic Trail, this 160 acre park provides an excellent opportunity to experience Wisconsin's glacial history. A scenic overlook shows the moraine, the restored oak Savannah & surrounding landscapes. Download the free GeoTourist app and select Prairie Moraine County Park trail to learn more. Along the trail find numbered sign posts and enjoy the story about each site. There is also an award winning 79-acre dog park.

Activities: Dog park* & hiking

Location: 6724 Wesner Rd
Verona, WI 53593

Porta Potty available at dog park entrance.

Schumacher Farm Park

This 117-acre outdoor museum represents local farm life during the 1920-30's and features a 10-acre prairie restoration, farmstead, and the Center for Rural History.

Activities: Hiking

StoryWalk: Miss Rumphius, by Barbara Cooney

Location: 5682 WI-19,
Waunakee, WI 53597

No restroom facilities available.

Festge County Park

This park contains 155 acres of beautifully wooded parkland with hiking trails winding through a mature stand of hickory and oak trees. Other features include two shelter facilities, play equipment and shaded areas for family picnics. A natural history marker explains the area's glacial geology.

Activities: Scenic overlook & hiking

Location: 4894 Scherbel Rd.
Cross Plains, WI 53528

Vault restroom is available.

Scheidegger Forest

Nearly 80 acres and offers a mile of loop of hiking trails, and a reservable shelter. The area has been restored from a former Dane County Sheriff shooting range to a managed forest of primarily oak and hickory. The shelter, kiosk, and bathroom were all built from wood harvested on-site.

Activities: Hiking

Location: 1828 Range Trail
Verona, WI 53593

Vault restroom is available.

Healthy Parks, Healthy You

**Permit Required. Dogs are allowed in Dane County Parks but they must have a permit and be leashed.*



facebook.com/danecountyparks
facebook.com/foundationfordanecountyparks
facebook.com/deanhealthplan
facebook.com/SSMHealthDeanMedicalGroup


SSMHealth.


DeanHealthPlan
A member of SSM Health